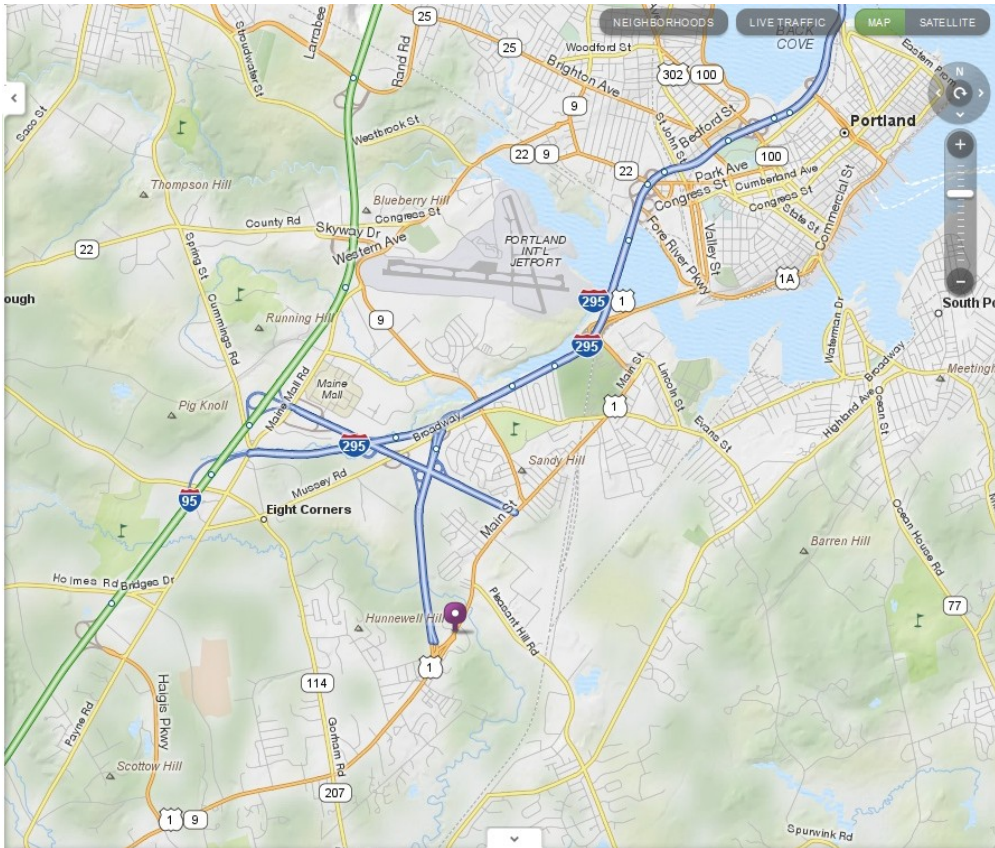


PEDIATRIC CARDIOLOGY ASSOCIATES IS MOVING TO A NEW OFFICE APRIL 1st.

Address:

Elevation Center, Suite C
71 US ROUTE 1, SCARBOROUGH, MAINE





From North

On 295 South:

Exit 2 towards US-1 South (**Scarborough/ Old Orchard**)

Merge onto **Scarborough Connector**

This becomes US-1 South

Make U-turn onto US-1 North/ ME-9, Blue Star Memorial Highway

See map below for where U-turn is made

On 95 South:

Exit 45 towards I-295/Maine Mall Road/US-1

Merge onto Maine Turnpike Authority Approach

Take Exit for **Scarborough/ Old Orchard**

Merge onto **Scarborough Connector**

This becomes US-1 South

Make U-turn onto US-1 North/ ME-9, Blue Star Memorial Highway

See map below for where U-turn is made

**From South
On 95 North:**

Merge onto I-295 North via Exit 44 (South Portland/Downtown Portland)
Take Exit 1 to US-1/ South Portland
Merge onto Maine Turnpike Authority Approach
Take Exit for **Scarborough/ Old Orchard**

Merge onto **Scarborough Connector**
This becomes US-1 South

Make U-turn onto US-1 North/ ME-9, Blue Star Memorial Highway
See map below for where U-turn is made

